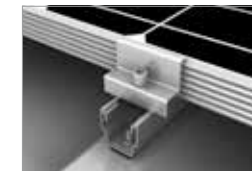
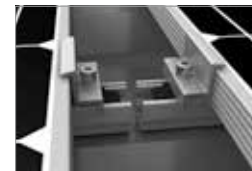
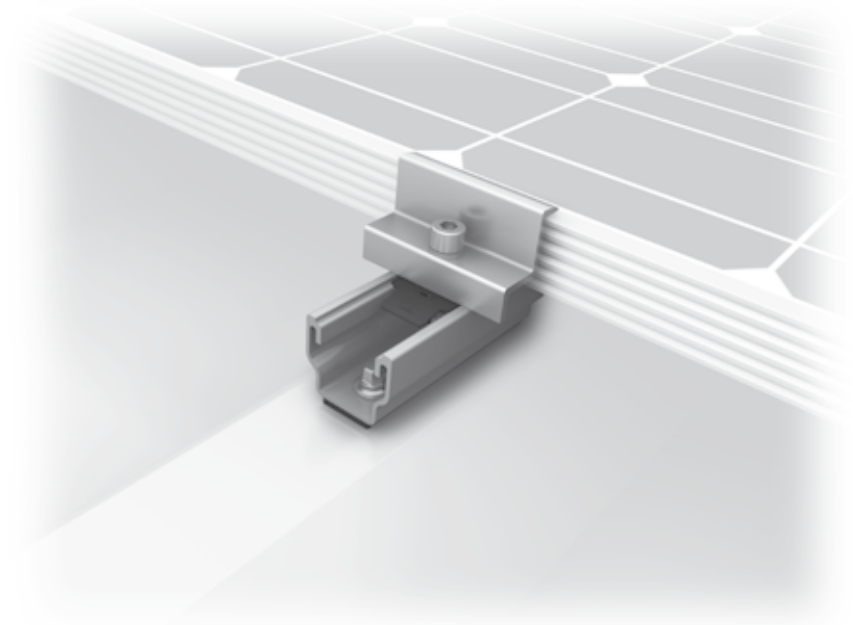


Mounting systems for solar technology



SERVICE-HOTLINE
+49 (0)7159 42059-0
www.k2-systems.com

Produktblatt MultiRail | GB7 | 0115 | Subject to change
Product illustrations are exemplary illustrations and may differ from the original.



K2 SYSTEMS
PITCHED ROOF SYSTEMS
MULTIRAIL SYSTEM

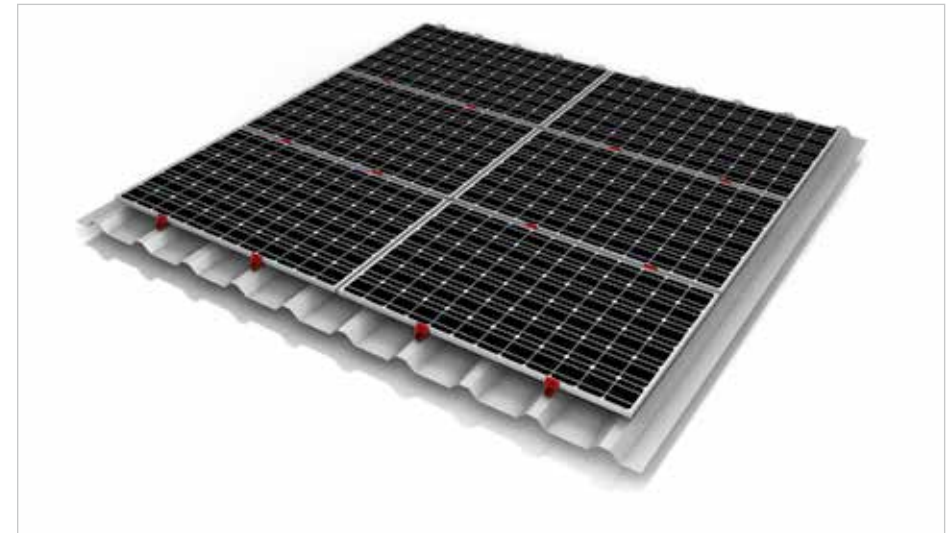
MULTIRAIL SYSTEM

- The short K2 MultiRail aluminium mounting rail for direct installation on roof boarding, trapezoidal sheet metal or tin roofs independently from crest spacings
- Direct module attachment
- Very easy to install with only three simple system components
- Modular design suitable for any system size
- Available in a variety of lengths
- Available with pre-assembled EPDM backing
- Minimized transport and storage costs
- Compatible to other K2 Systems for example
 - K2 S-Dome small, for one-sided configuration (10°) suitable for all orientations, for roofs with low roof pitch (<5°)

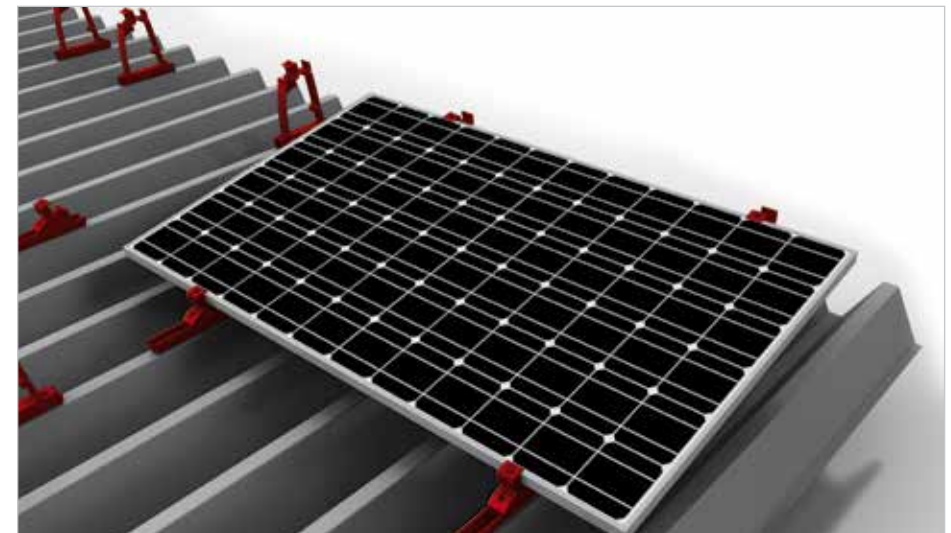


Technical data

Field of application	Flat and sloped roofs
Roofing	Roof boarding, trapezoidal sheet metal or tin roofs
PV modules	suitable for all standard framed module types
Module orientation	Portrait / Landscape (with cross bracing)
Material	Aluminium (EN AW-6063 T66)
Roof connection	Screw connection depending on roof type with drilling screws or self-tapping screws with supervisory approval or timber screws
Static principles	Calculation principles in accordance with Eurocode 9 (DIN EN 1999)
System components MultiRail	K2 MultiRail, self-tapping screws, mid and end clamp sets
System components S-Dome small	K2 MultiRail 25, Self-tapping screw Allen Bolt, FlexClamp small, washer, M K2, K2 Dome SD small, K2 S-Dome small



Detail illustration - MultiRail on Trapezoidal sheet



Detail illustration - MultiRail with S-Dome small